

## s.84 EN331

full port 1/4"÷4"

hot forged brass ball valves



### Features and Specifications:

- \* **Hot forged** sand blasted, nickel plated brass body and cap sealed with Loctite,
- \* **Approved in sizes up to 2"** by British Gas (UK), DVGW (D), SVGW (CH), Suruhanjaya Tenaga (MY), Danish Board of European Technical Approval for Construction Products (DK), PCT (RU),
- \* Finest brass according to **EN 12165** and **EN 12164** (formerly DIN 17660 and UNI 5705-65) specifications,
- \* Assessment according to **Pressure Equipment Directive 97/23 CE** module B+D by Pascal (1115),
- \* **Full port** to DIN 3357 for maximum flow,
- \* **24h 100%** seal test guaranteed,
- \* Pure **PTFE** self-lubricating seats with flexible-lip design,
- \* Dual sealing system allows valve to be operated in either direction making **installation easier**,
- \* Chrome plated brass ball for **longer life**,
- \* **Blowout-proof** nickel plated brass stem,
- \* FPM O-rings at the stem for **maximum safety**,
- \* **No maintenance** ever required,

Handle stops on body to **avoid stresses** at stem,

- \* **Geomet®** carbon steel handle with thick PVC dip coating,
- \* Handle clearly shows **ball position**,
- \* **DIN 2999, ISO 228** parallel Female by Female threads,
- \* **Silicone-free** lubricant on all seals,
- \* 40 bar (Kg/cm<sup>2</sup>) up to 2", 30 bar over 2", non-shock cold working **pressure**,
- \* -40°C +170°C **temperature** (Warning: freezing of the fluid in the installation may severely damage the valve),
- \* For use with **dangerous fluids** temperature rating is -20°C +60°C and pressure rating is 5 bar.

### Options up to 2" size:

- \* **Male** by **Female** threads,
- \* **Stem extension**,
- \* **T-handle**,
- \* **Oval lockable handle**,
- \* **AISI 430 stainless steel handle**,
- \* **Patented locking device**.

### Upon request:

- \* **Glass filled PTFE** seals,
- \* **Custom design**.

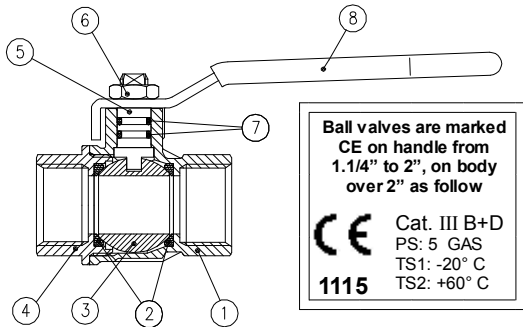


**ASSESSMENT  
ACCORDING TO  
97/23 CE  
module B+D  
by Pascal**

**CE 1115**



1.1/4"±2" hollow ball

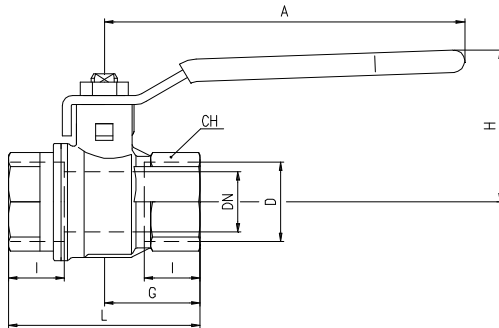


Ball valves are marked  
CE on handle from  
1.1/4" to 2", on body  
over 2" as follow

**CE** Cat. III B+D  
PS: 5 GAS  
TS1: -20° C  
TS2: +60° C

**1115**

PART DESCRIPTION		Q.ty	Material
1	Nickel plated body	1	CW617N
2	Seat	2	Ptfe
3	Chrome plated ball	1	CW617N
4	Nickel plated end cap	1	CW617N
5	Nickel plated stem O-ring design	1	CW617N
6	Geomet® nut	1	CB4FF
7	O-ring	2	FPM
8	Yellow PVC coated geomet® steel handle	1	DD11

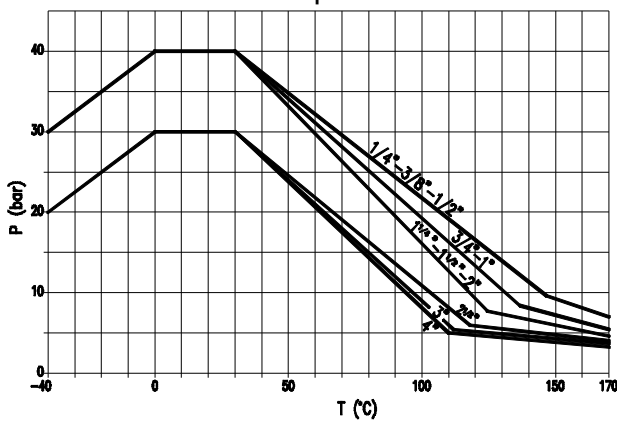


Code	S84B00	S84C00	S84D00	S84E00	S84F00	S84G00	S84H00	S84I00	S84L00	S84M00	S84N00
D (Inch)	1/4	3/8	1/2	3/4	1	1 1/4	1 1/2	2	2 1/2	3	4
DN (mm)	8	10	15	20	25	32	40	50	65	80	100
I (mm)	12	12	15.5	17	21	23	23	26.5	32	35	41.5
L (mm)	45	45	59	64	81	93	102	121	156	177	216
G (mm)	22.5	22.5	29.5	32	40.5	46.5	51	60.5	78	88.5	108
A (mm)	82	82	100	120	120	158	158	158	255	255	255
H (mm)	38	38	43	50	54	73	79	86	132	140	154
CH (mm)	20	20	25	31	40	49	54	68.5	85	99	125

DN shows the nominal flow diameter. Actual flow diameter complies with full port DIN 3357 part 4.

Stem configuration of valves over 2" is slightly different. Ask for details at our Service Center.

Pressure -Temperature chart



Pressure drop chart

